



# ANGLER'S LODGE

*Welcome!*



# DIRECTORY OF SERVICES





# Welcome

## TO BASS PRO SHOPS ANGLER'S LODGE!

We are thrilled that you have chosen to join us for a stay in the Ozarks. We invite you to leave everything behind and enjoy all that we offer here at Angler's Lodge. As a member of the Bass Pro Shops family, you can count on genuine hospitality and unmatched attention to detail to help make your experience memorable.

If there is anything that we can do to make you more comfortable, please do not hesitate to call the Front Desk.

### INDEX

Guest Information.....	3
Service Directory .....	4
Big Cedar Resort Activities .....	5
Big Cedar Kids' Adventure Club.....	5
Dining .....	6-7
Big Cedar Lodge.....	8-9
Big Cedar Golf .....	10-11
Top of the Rock.....	12-13
Dogwood Canyon Nature Park.....	14-15
Camp Long Creek.....	16
Long Creek Marina .....	16-17
Bass Pro Shops Shooting Academy.....	18
Bass Pro Shops .....	19
Wonders of Wildlife .....	20-21
Big Cypress Lodge .....	22
Important Safety Information .....	23-25
Map of Area Attractions.....	26

# GUEST INFORMATION

Thank you for choosing to visit us at Angler's Lodge. This directory will provide you with details to experience all that we have to offer and make your stay in the Ozarks unforgettable!

- Check-in time is 3:00pm. Check-out time is 11:00am (late checkout fees do apply).
- All accommodations and patios are non-smoking.
- Photocopy and postal services are located at the Front Desk.
- Please contact the Front Desk for any lost and found items.
- Ice machines are located on each floor.
- Complimentary breakfast is offered daily from 6:30am-10:00am.
- Pool hours are 10:00am-10:00pm.
- Fitness Center is available 24 hours.
- For any additional needs or questions, please contact the Front Desk.



## TELEPHONE DIALING INSTRUCTIONS

- For room-to-room calls, dial "1" + room number
- For off-property calls, dial the area code + phone number.

## WI-FI INSTRUCTIONS

1. Turn on your computer and ensure Wi-Fi is enabled.
2. Select the Angler's Lodge wireless network.
3. Select "Angler's Lodge Guest" from the W-Fi listing.
4. Enter the Wi-Fi password written on the insert you received from the Front Desk at check-in.
5. You're now connected!





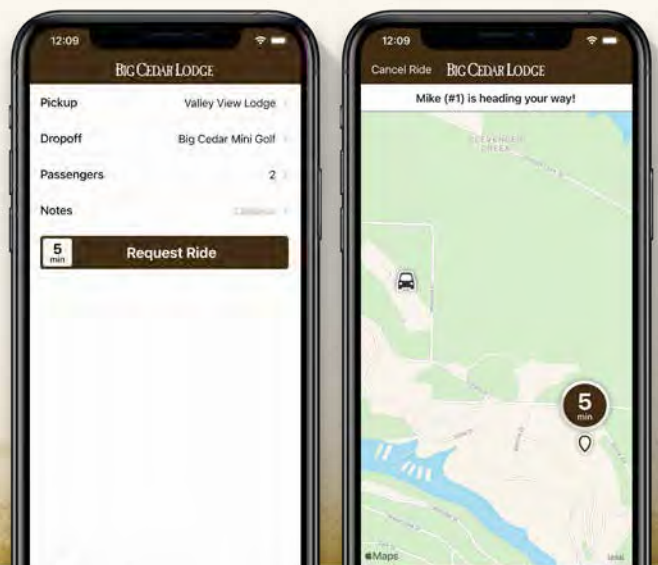
# SERVICE DIRECTORY

To dial a Big Cedar Lodge extension, dial "102" followed by the extension listed below.

- Bass Pro Shops Long Creek Marina . . . . 417-334-4860
- Bass Pro Shops Shooting Academy . . . . . Ext. 5476
- Big Cedar Dining
  - Buzzard Bar . . . . . Ext. 7005
  - Devil's Pool Restaurant . . . . . Ext. 7000
  - Truman Café and Custard . . . . . Ext. 7241
  - Uncle Buck's Fish Bowl & Grill . . . . . Ext. 5252
- Big Cedar Family Photography . . . . . Ext. 7107
- Buffalo Ridge Golf Course & Pro Shop . . . . Ext. 5430
- Cedar Creek Spa . . . . . Ext. 5201
- Conferences & Banquets . . . . . Ext. 5159
- Dining Reservations . . . . . Ext. 7107
- Dogwood Canyon Nature Park . . . . . 877-459-5687
- Emergency Assistance . . . . . Dial 0
- Front Desk . . . . . Dial 0
- Fun Mountain . . . . . Ext. 5240
- Guest Services . . . . . Ext. 7107
- Group Sales . . . . . Ext. 5039
- Housekeeping . . . . . Dial 0
- Big Cedar Activities Reservations . . . . . Ext. 7107
- Big Cedar Lodging Reservations . . . . . Ext. 4000
- Long Creek Marina . . . . . 417-334-4860
- Lost & Found . . . . . Dial 0
- Medical Services
  - Cox Medical Center Branson . . . . . 417-335-7000
- Mountain Top Golf Course . . . . . Ext. 5421
- Ozarks National Golf Course . . . . . Ext. 5421
- Operator . . . . . Dial 0
- Security . . . . . Dial 0
- The Shoppe at Big Cedar . . . . . Ext. 7151
- Top of the Rock
  - General Information . . . . . Ext. 4002
  - Ancient Ozarks
    - Natural History Museum . . . . . Ext. 5310
  - Arnie's Barn General Store . . . . . Ext. 5339
  - Lost Canyon Cave & Nature Trail . . . . . Ext. 5305
  - Top of the Rock Golf Course . . . . . Ext. 5343
  - Top of the Rock Golf Pro Shop . . . . . Ext. 5343
  - Welcome Center . . . . . Ext. 5305
- Top of the Rock Dining
  - Arnie's Barn Restaurant . . . . . Ext. 5330
  - Osage Restaurant . . . . . Ext. 5320
- Wake-Up Calls . . . . . Dial 0
- Weddings . . . . . Ext. 5159

## BIG CEDAR SHUTTLE APP

Take advantage of our complimentary shuttle system between the Big Cedar golf courses, Top of Rock, Big Cedar Lodge, and your accommodation. Download the Big Cedar Lodge shuttle app to summon a shuttle. With this service you can see where shuttles are in relation to yourself, get estimated wait times, request a ride and more. You may also call our Shuttle Dispatch Office at 417-339-5105 to request a ride.





# BIG CEDAR RESORT ACTIVITIES

As part of the Big Cedar Lodge family, guests at Angler's Lodge are also able to take advantage of these amenities at nearby Big Cedar Lodge.

## YEAR-ROUND ACTIVITIES

- Horseshoes
- Miniature Golf
- Paved 5K Trail
- Pickleball
- Playground
- Sand Volleyball
- Shuffleboard

## SEASONAL ACTIVITIES

- Movies on the Lawn
- Family Fun Bonfires



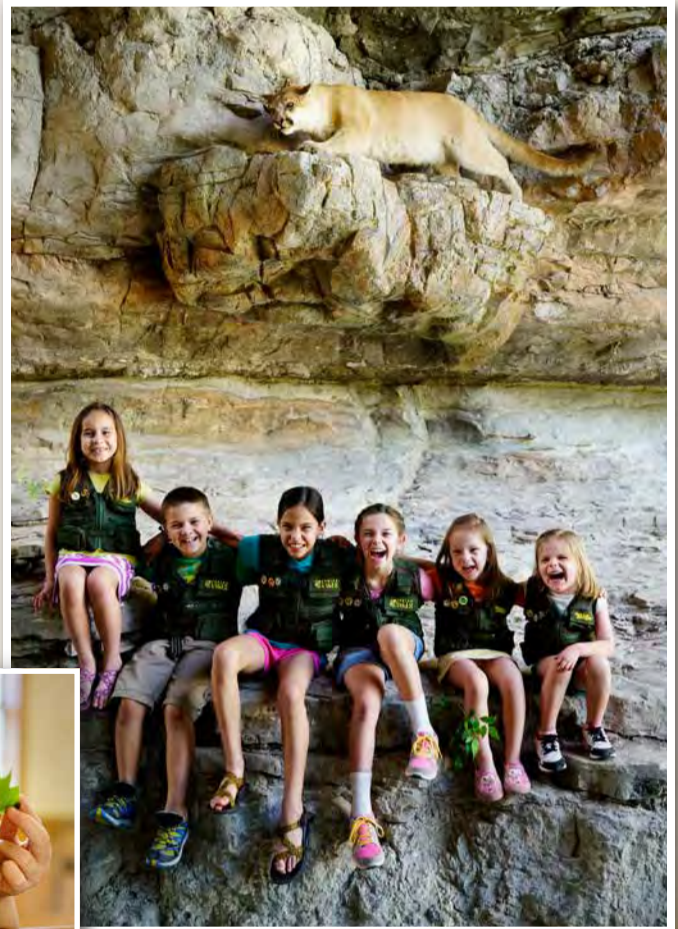
## BIG CEDAR LODGE



## KIDS' ADVENTURE CLUB

The Kids' Nature Discovery Center, located inside Big Cedar Fun Mountain, hosts Kids' Adventure Club, where children ages 4-12 enjoy four-hour fun, interactive sessions. Each adventure is filled with games, nutritious snacks and learning experiences while earning themed adventure badges. Explore other Big Cedar activities knowing your children are in a safe, clean and comfortable space exploring on their own. They won't even know you're gone! *Reservations are required.*

**FOR MORE INFORMATION  
AND A FULL SCHEDULE OF  
EXCURSIONS, BOOK ONLINE  
AT [BIGCEDAR.COM](http://BIGCEDAR.COM)**





# DINING OPTIONS

---



## DINING AT ANGLER'S LODGE

### COMPLIMENTARY BREAKFAST

Join us for a complimentary hot breakfast before you start your day's adventure! Our breakfast buffet is offered daily from 6:30am-10:00am.



## TALL TALES BAR & GRILL

Enjoy a taste of the Ozarks in an over-the-top, sports bar theme. Tall Tales Bar & Grill features delicious cuisine, arcade games, a golf simulator and multiple large-screen TV's showcasing the day's biggest games.

This restaurant is just steps away from your overnight accommodation. *Seasonal hours apply.*



## DINING AT BIG CEDAR LODGE

### WORMAN HOUSE BISTRO

This beloved historic landmark, originally built in the 1920s, has always been a guest favorite! The Worman House has been reopened and now offers delicious French bistro cuisine, showcasing spectacular views of Table Rock Lake. *Reservations are recommended.*



## DEVIL'S POOL RESTAURANT

Located in one of the original 1920's homesteads, this Adirondack-style restaurant serves homestyle fare and is available for breakfast, lunch and dinner. *Dinner reservations are recommended.*



## BUZZARD BAR

Located just downstairs from Devil's Pool Restaurant, Buzzard Bar serves up traditional comfort foods and features nightly live entertainment with Big Cedar's own Singin' Cowboy. *Seating is first come, first served. Cover charge may apply.*



## DINING AT BIG CEDAR LODGE *(Continued)*

### UNCLE BUCK'S GRILL

Located inside Fun Mountain, Uncle Buck's Grill features a unique atmosphere designed for family fun and casual dining. The menu offers a variety of tasty favorites like burgers, salads, sandwiches and pizza as well as sweet treats such as shakes, floats and banana splits. *Seating is first come, first served. Seasonal hours apply.*



### TRUMAN CAFÉ AND CUSTARD

Visit Truman Café and Custard for breakfast or lunch, delicious desserts, baked goods and specialty coffee. Truman is the perfect place to satisfy your sweet tooth on your next visit to Big Cedar Lodge. *Reservations are not required. Seasonal hours apply.*



## DINING AT TOP OF THE ROCK

### ARNIE'S BARN

This historic 150-year-old wooden barn was relocated from Arnold Palmer's hometown in Latrobe, Pennsylvania and reconstructed at Top of the Rock by local Amish craftsmen. It serves contemporary Mexican cuisine with a unique Ozarks flair. *Dinner reservations are recommended. Seasonal hours apply.*



### OSAGE RESTAURANT

Overlooking Table Rock Lake, and inspired by the captivating history and stunning beauty of the Ozarks, Osage Restaurant offers upscale American steakhouse cuisine and our famous Sunday Brunch. *Reservations are strongly recommended. Seasonal hours apply. Please note that resort attire is required in Osage Restaurant; collared shirts are recommended for men over the age of 12.*



### BUFFALO BAR

Located on the lower level of Osage Restaurant, Buffalo Bar serves a full dinner menu and features unique indoor/outdoor seating with sweeping Ozark Mountain views. *Seating is first come, first served. Seasonal hours apply.*



### END OF THE TRAIL ALL-AMERICAN WINE CELLAR

A stone-lined stairwell leads from Buffalo Bar to the expansive wine bar and whiskey room, featuring all-American wines and whiskeys. A banquet space, opening to an infinity pool and "End of the Trail" statue, is available for private events and family gatherings. *Reservations are not required. Seasonal hours apply.*



**FOR DINING RESERVATIONS AND CURRENT HOURS OF OPERATION,  
CALL 1-800-225-6343 OR VISIT US ONLINE AT [BIGCEDAR.COM](http://BIGCEDAR.COM)**





**PRIVATE LOG CABIN**



**FALLS LODGE**



**FUN MOUNTAIN**



# BIG CEDAR<sup>®</sup> LODGE

• AMERICA'S PREMIER WILDERNESS RESORT •

Located in the Missouri Ozark Mountains, overlooking Table Rock Lake, Big Cedar<sup>®</sup> is a remote haven of natural beauty and outdoor adventure. As part of the Bass Pro Shops family, this premier wilderness resort has received numerous awards, including being named the number one resort in the Midwest by *Travel and Leisure* magazine for three consecutive years.

With genuine Ozarks hospitality and unmatched attention to detail, Big Cedar features a collection of lodges, cottages and cabins offering the perfect place to relax with family and friends after a day on the lake. The resort is home to a variety of world-class restaurants and attractions like two full-service marinas, championship golf, an expansive shooting facility and Fun Mountain, a 50,000-square-foot activity center. This addition features an arcade, laser tag, bumper cars, and an underwater-themed restaurant and bowling alley.





# BIG CEDAR LODGE *(Continued)*

Set out on a lake outing for a guided fishing excursion, boat rentals or a sunset dinner cruise aboard our 62' luxury yacht, Lady Liberty. Experience the ultimate in relaxation and rejuvenation at the 18,000-square-foot Cedar Creek Spa. This world-class facility is dressed in rustic elegance and features one-of-a-kind amenities and services.

With countless venues, activities, team building opportunities and attractions, Big Cedar Lodge is the ideal destination for your group gathering or special event. The Big Cedar properties feature four wedding chapels, numerous outdoor settings, over 20,000 square feet of meeting space and a grand conference center that can seat up to 1,000 guests theater style.

Whether you are looking for an adventurous outing or a relaxing retreat. Big Cedar Lodge is your perfect getaway!

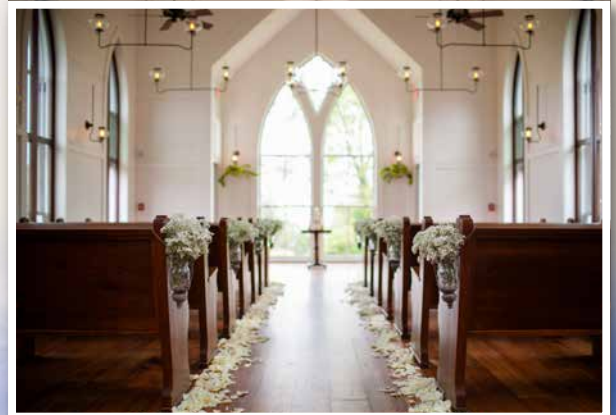
**FOR RATES, RESERVATIONS AND AVAILABILITY  
CALL 1-800-225-6343 OR VISIT BIGEDAR.COM**  
190 Top of the Rock Rd., Ridgedale, MO 65739



**WORLD-CLASS CEDAR CREEK SPA**



**GRANDVIEW CONFERENCE CENTER**



**BEAUTIFUL WEDDING LOCATIONS**







# AMERICA'S NEXT GREAT GOLF DESTINATION

Inspired by a deep desire to connect people to nature, Bass Pro Shops Founder, Johnny Morris, has set out to create one of the greatest golf experiences in the country. Golf at Big Cedar includes the following world-class destinations:

## PAYNE'S VALLEY COURSE

Paying tribute to Ozarks native and World Golf Hall of Fame member, Payne Stewart, Payne's Valley is the first public-access golf course designed by 82-time PGA TOUR winner Tiger Woods and Woods-led golf course design firm, TGR Design. Payne's Valley stands out with its inviting layout, pristine water features, large fairways and greens, and spectacular 19th hole... the Big Rock at Payne's Valley™ by Johnny Morris.

1250 Golf Club Drive, Hollister, MO 65672.

## OZARKS NATIONAL COURSE

Measuring 7,036 yards from the back tees, Ozarks National is Missouri's first-and-only golf course designed by architect duo Bill Coore and Ben Crenshaw. The 18-hole layout represents the terrain of the Ozarks with beautiful views and features challenging carries with a variety of visually appealing approach shots that are highlighted by the native habitat.

2219 Branson Creek Blvd., Hollister, MO 65672.

## BUFFALO RIDGE COURSE

Herds of roaming bison graze on the native prairie grasses that surround Buffalo Ridge. The 18-hole championship course designed by Tom Fazio with visionary conservationist Johnny Morris, showcases the beauty of the Ozarks with natural rock formations, caves, creeks, lakes and waterfalls throughout the routing of one of Missouri's best golf courses.

1001 Branson Creek Blvd., Hollister, MO 65672.



**PAYNE'S VALLEY COURSE**



**OZARKS NATIONAL COURSE**



**BUFFALO RIDGE COURSE**





**TOP OF THE ROCK COURSE**



**MOUNTAIN TOP COURSE**



**PRACTICE FACILITIES**

# **BIG CEDAR GOLF** *(Continued)*

## **TOP OF THE ROCK COURSE**

Top of the Rock Golf Course, a 9-hole par-3 Signature Design by Jack Nicklaus, was the first-ever par-3 course to be included in a professional championship. Perched high above Table Rock Lake, the peaceful waterfalls, wandering creeks, bass-filled ponds and pristine lakes of Top of the Rock complete a true celebration of nature, the Ozarks and the game of golf. Be sure and check out the Top of the Rock Pro Shop located in Arnie's Barn – it has everything needed for a day on the course.

150 Top of the Rock Rd., Ridgedale, MO 65739.

## **MOUNTAIN TOP COURSE**

Johnny Morris teamed up with World Golf Hall of Fame legend Gary Player to create Mountain Top, a world-class 13-hole par-3 course that delivers an unparalleled experience for golfers. The walking-only course routes through unforgettable rock formations and includes some of the most dramatic views in the Ozarks while delivering a rewarding experience for all skill levels.

1250 Golf Club Drive, Hollister, MO 65672.

## **PRACTICE FACILITIES**

Big Cedar Lodge offers world-class practice facilities for both experienced golfers looking to master their swing and beginner golfers just starting to pick up the game. The driving ranges feature an unending amount of open space ready for endless play. Course-style chipping greens and short game areas are also available, with room for pitching and sand practice along with several putting greens, including a 9-hole Himalayan-style putting course designed by Missouri native Tom Watson.

**FOR RATES, RESERVATIONS AND AVAILABILITY  
CALL 1-800-225-6343 OR VISIT [GOLFBIGCEDAR.COM](http://GOLFBIGCEDAR.COM)**







*Johnny Morris'*

# TOP OF THE ROCK

## OZARKS HERITAGE PRESERVE™



**SUNSET CANNON FIRING CEREMONY**



**LOST CANYON CAVE & NATURE TRAIL**



**ANCIENT OZARKS NATURAL HISTORY MUSEUM**

Johnny Morris' Top of the Rock Ozarks Heritage Preserve reveals the majestic beauty of the Ozarks as it has never been seen before. This landmark first for the region is home to remarkable restaurants, world-class golf and extraordinary attractions.

### **LOST CANYON CAVE & NATURE TRAIL**

Begin your journey to Top of the Rock with an unforgettable two-and-a-half mile ride in an electric cart along the Lost Canyon Nature Trail. Explore the walls of the ancient bedrock canyon, peer over the edge of picturesque vistas and connect with the beauty and wonder of the Ozarks. Along the trail you can even stop inside the Lost Canyon Cave for a signature cocktail at the Bat Bar (open seasonally) while taking in captivating views of the four-story waterfall. Lost Canyon Cave & Nature Trail ticket purchases include complimentary admission to the Ancient Ozarks Natural History Museum!

### **ANCIENT OZARKS NATURAL HISTORY MUSEUM**

Centuries before Europeans ever touched these shores, unimaginable beasts roamed this land. Years later, cave dwellers, then Native Americans made their home in these Ozark hills. The Ancient Ozarks Natural History Museum will bring you face-to-face with carbon-dated skeletons of ancient Missouri creatures and true-to-life dioramas of animals that once roamed the Ozarks. Explore over 35,000 square feet of one of the nation's largest collections of Native American artifacts and artwork as well as expansive galleries on the American West and Civil War.

**Purchase your tickets for the Museum and Cave & Nature Trail at the Angler's Lodge Front Desk to save on admission!**





## TOP OF THE ROCK *(Continued)*

### DINING

**Osage Restaurant** is the cornerstone dining experience featuring American cuisine with sweeping Ozark Mountain views. It is a fascinating destination where guests can linger long after their meal to take in the fine artwork and native artifacts. Located on the lower level of Osage Restaurant, **Buffalo Bar** offers a full dinner menu including wood-fired pizzas, premium cocktails and spirits, and open-air dining that offers stunning views of Table Rock Lake. A stone-lined stairwell leads to the expansive **End of the Trail All-American Wine Cellar** which includes a wine tasting bar, whiskey room and banquet space. **Arnie's Barn** is a 150-year-old wooden barn that was brought from Arnold Palmer's hometown in Latrobe, Pennsylvania and reconstructed at Top of the Rock by a local Amish family. This magnificent structure houses a Mexican restaurant that features soaring, vaulted ceilings, two lofts and is also home to the Top of the Rock Pro Shop.

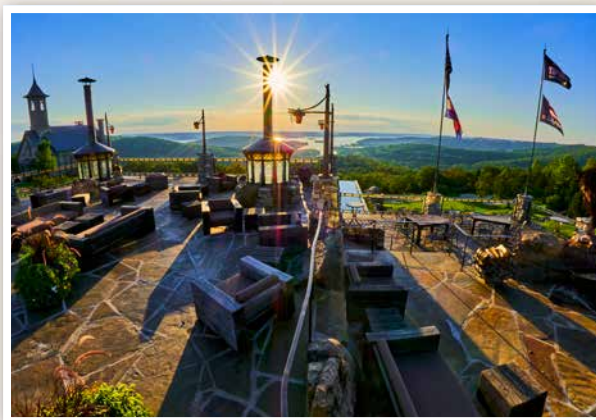
### CATHEDRAL OF NATURE

While at Top of the Rock, be sure to visit the sinkhole, now known as the Cathedral of Nature. Featured in international news since its formation in May of 2015, Johnny Morris is deep into a national treasure hunt that may very well reveal a hidden natural wonder buried deep within the Ozarks.

**FOR RATES, RESERVATIONS AND AVAILABILITY  
CALL 1-800-225-6343 OR VISIT [TOPOFTHEROCK.COM](http://TOPOFTHEROCK.COM)  
150 Top of the Rock Rd., Ridgedale, MO 65739**



**END OF THE TRAIL ALL-AMERICAN WINE CELLAR**



**BUFFALO BAR PATIO DINING**



**CATHEDRAL OF NATURE**





# DOGWOOD CANYON NATURE PARK

Experience the unspoiled beauty of mother nature at Dogwood Canyon Nature Park. Guided by Johnny Morris' commitment to conservation, this 10,000-acre paradise provides a perfect setting for adventure seeking and memory making. Ask us about our dog-friendly policies!

## MILL & RESTAURANT

As you enter the park, visit the Dogwood Canyon Mill and witness regular, live demonstrations with a millstone powered by a waterwheel. These fresh-ground products are even available for purchase, allowing you to take home a piece of the experience. Leading from the Mill to the Canyon Grill, walk through a captivating display of Native American artifacts that offer a glimpse into the life of the area's earliest settlers. Once in the restaurant, enjoy a unique menu of Ozarks flavor before setting out on your adventure! *Access is complimentary with park admission.*

## NATURE & CONSERVATION CENTER AND TREEHOUSE

Located across from the Mill is a one-of-a-kind Nature & Conservation Center and a Treehouse featured on the Animal Planet TV show, *Treehouse Masters*. The park and foundation educates others about the importance of protecting, conserving and preserving the great outdoors by taking the cause into the classrooms of the Nature & Conservation Center and the hands-on Treehouse activities. You won't want to miss this chance to learn more about the beauty of the Ozarks.

## WILDLIFE TRAM TOURS

Step aboard the comfortable, open air trams and explore the scenic beauty of Dogwood Canyon on our Wildlife Tram Tour. You'll see our most popular sites and waterfalls and then cross the Arkansas border where your tram may mingle with herds of bison, elk and Texas longhorn. *Reservations are recommended, and an additional fee is required.*





# DOGWOOD CANYON *(Continued)*

## HORSEBACK RIDING

Horseback riding at Dogwood Canyon presents an opportunity to experience the park in areas not seen by the tram or from walking and biking trails. Experienced wranglers guide guests on a leisurely ride while exploring ridges, hollows, old logging roads and other scenic views. Age requirements and weight limits apply. *Reservations are recommended, and an additional fee is required.*

## TROUT FISHING

One of Dogwood Canyon's greatest appeals is the sparkling, spring-fed water that is home to our magnificent rainbow trout. We offer half-day guided catch and release fishing, and self-guided catch and release or catch and keep fishing. At Dogwood Canyon, there is no license or trout stamp requirement, and our General Store has everything needed for your fishing adventure. *An additional fee is required. Self-guided fishing can be reserved at the ticket counter. Guided fishing must be reserved online in advance.*

## HIKE & BIKE

Self-guided tours allow you to explore miles of paved and rugged trails by foot or bike. You can bring your bike or single-speed, coaster-brake bikes are available in a variety of sizes (including kiddie carts) to provide a comfortable ride. *Bike rental is available at the General Store for an additional fee.*

## SEGWAY TOURS

Modern innovation comes to the wilderness! Take an enjoyable and descriptive 90-minute guided Segway tour through Dogwood Canyon's most breathtaking sites. *Age requirements and weight limits apply. Reservations are recommended, and an additional fee is required.*

## PRIVATE WILDLIFE TOURS

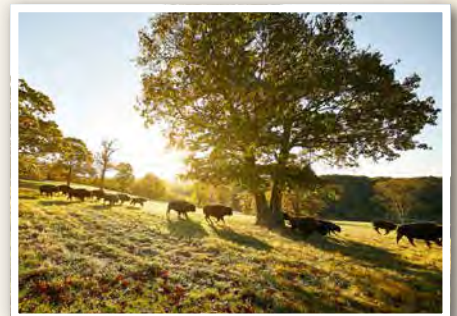
The most "up close and personal" way to view the park is aboard one of our cross-country vehicles. Offered year round, but with limited availability, this guided tour gives parties of one to three guests a close glimpse into the heart of the canyon and a return trip via back-country logging roads. *Reservations are required in advance, and an additional fee is required.*

## WEDDINGS

Make your wedding day picture-perfect at Dogwood Canyon. Choose from beautiful backdrops, a stunning chapel and intimate locations overlooking cascading waterfalls. *Inquire at [weddings@dogwoodcanyon.org](mailto:weddings@dogwoodcanyon.org).*

**FOR RATES, RESERVATIONS AND AVAILABILITY CALL  
1-877-459-5687 OR VISIT [DOGWOODCANYON.ORG](http://DOGWOODCANYON.ORG)**

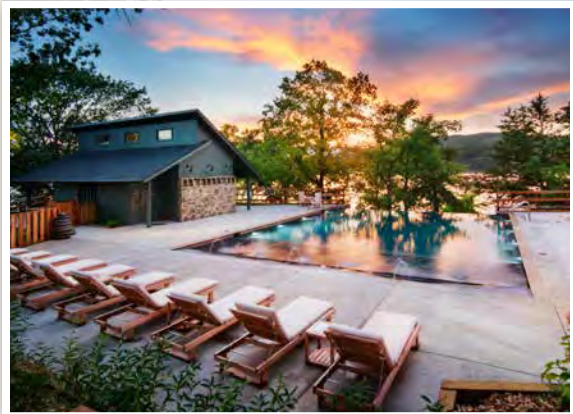
**Purchase your tickets at the Angler's Lodge Front Desk to save on admission!**  
2038 W. State Highway 86, Lampe, MO 65681  
Located just a short drive southwest near the Missouri/Arkansas state line.





# CAMP LONG CREEK AT BIG CEDAR LODGE

Camp Long Creek offers accommodations that bring you in close contact with nature, combining camping and comfort. Situated on Table Rock Lake, enjoy a serene backdrop while relaxing in one of the unique accommodations: shepherds huts, camp cabins or glamping tents. This new addition is specially designed for the whole family and features pet-friendly units, a full-service marina and an infinity pool. It's hard to imagine a better setting to create lasting memories with your family in the great outdoors.



Long Creek Marina is the best place to start your day on the 43,000-acre Table Rock Lake. Whether you like cruising, waterskiing, tubing, wakeboarding or jet skiing, Long Creek Marina has the most state-of-the-art water sports equipment available. Brought your own boat? Be greeted with genuine Ozark hospitality from the Marina staff at the gas dock to get fueled up for your day of fun on the lake. From veteran anglers to first-time fishers, the Long Creek Marina store has everything you need to stock up your cooler for a day on the water. Is the lake calling you yet?

## BOAT, PERSONAL WATERCRAFT & ACCESSORY RENTALS

You can launch your own boat or rent fully-equipped Tracker bass boats, ski boats and pontoon boats by the hour or by the day! We offer the most state-of-the-art water sports equipment available including WaveRunners, tubes, wakeboards, kneeboards and all your skiing accessories.

## GOIN' JESSI CRUISES

Take a private one-hour champagne tour of Table Rock Lake aboard the Goin' Jessi, a vintage wooden Chris-Craft boat. With her inboard motor, she was built for cruising. Just sit back and let your captain take you for a relaxing sightseeing excursion. Cruises are available April through October. *Reservations required.*





# LONG CREEK MARINA *(Continued)*

## LADY LIBERTY CRUISES

Set sail and dine on our beautiful 62' luxury yacht and experience delicious food, live music and unbelievable views of Table Rock Lake. The Lady Liberty offers various unique dining experiences including our Fireworks Cruises for the best seat in the house for Big Cedar's holiday fireworks shows. The Lady Liberty is also available for private celebrations, corporate and group events. *Reservations required. All guests must be able to navigate stairs.*

## SLIP RENTALS

We offer a variety of sizes in overnight and annual slip rentals. All docks have power, water and locking gates for convenience and high level of security.

## PROFESSIONAL SKI SCHOOL

Learn to Ski, Slalom, Wakeboard, Kneeboard, or Tube on Table Rock Lake with a professional ski instructor! Available May through September. *Reservations required.*

## PROFESSIONAL FISHING GUIDES

We offer professional local guides with knowledge of the best angling equipment and techniques. Guide services are offered daily. *Reservations required.*

## MISSOURI FISHING LICENSES

We have the following fishing licenses available for purchase:

- Annual resident/non-resident licenses for ages 16 and older.
- Day permits for residents/non-residents ages 16 older.
- Trout stamps for all ages.

**FOR RATES, RESERVATIONS AND AVAILABILITY  
CALL 1-800-225-6343 OR VISIT BIGEDAR.COM**

1368 Long Creek Rd., Ridgedale, MO 65739





# BASS PRO SHOPS Shooting Academy

The Bass Pro Shops Shooting Academy is an extraordinary outdoor playground for sportsmen and outdoor enthusiasts. Designed for all skill levels, this world-class facility teaches safety and offers training and experience in various shooting disciplines including ATA Trap, Wobble Trap, American Skeet, Sporting Clays and 5 Stand. Shotguns, ammunition, clay targets and all required safety gear are available, or bring your own!



The clubhouse, a repurposed antique barn, is a perfect venue for family or corporate gatherings, wedding receptions and catered events. The rustic setting truly embraces the beauty of the great outdoors. With hand-hewn timbers and stone fireplaces, the clubhouse is a remarkable indoor facility to pair with the beautiful stone patios for your special event. For large celebrations, concerts or expositions, the Thunder Ridge Arena is your ideal venue. This natural amphitheater overlooks Table Rock Lake and the Ozark hills.

**FOR RATES, RESERVATIONS AND AVAILABILITY  
CALL 1-800-225-6343 OR VISIT [BIGEDAR.COM](http://BIGEDAR.COM)  
190 Top of the Rock Rd., Ridgedale, MO 65739**





# YOUR ADVENTURE STARTS HERE



Over 45 years ago, we asked outdoor enthusiasts from all over the world what they wanted in an outdoor store. The response was overwhelming. "Give us the best selection of top quality merchandise, great service and low prices – all under one roof," they said. Well, here you are. Welcome to Bass Pro Shops Outdoor World. Inside our doors, you'll find more hunting, fishing, camping, boating and golf equipment than anywhere else, as well as outdoor apparel and footwear for the entire family. Plus, we feature TRACKER® and NITRO®, the best-selling boats in the world.

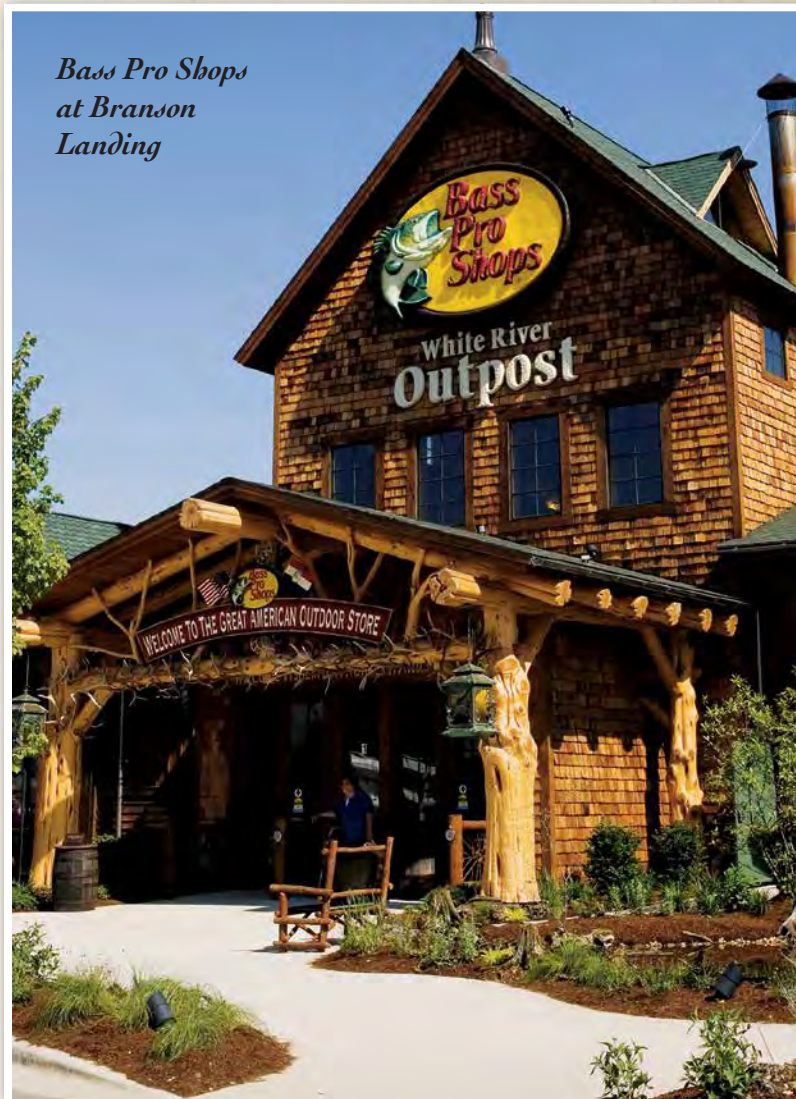
**WWW.BASSPRO.COM**

**BASS PRO SHOPS AT BRANSON LANDING**

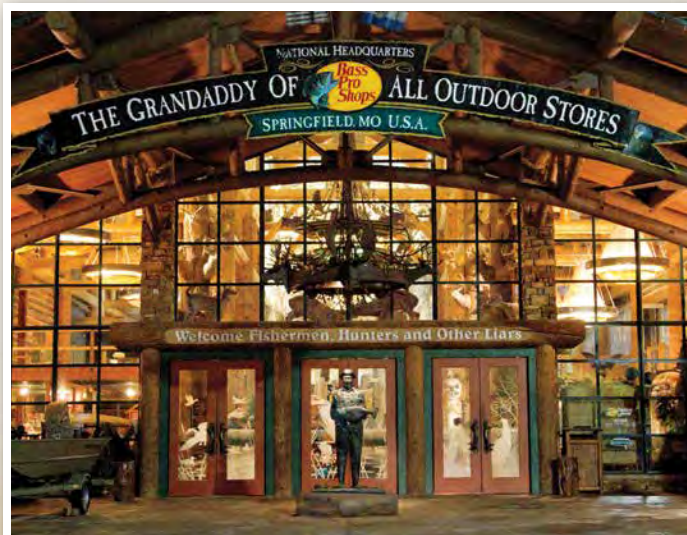
1 Bass Pro Dr., Branson, MO 65616  
417-243-5200

**BASS PRO SHOPS SPRINGFIELD**

1935 South Campbell Ave.,  
Springfield, MO 65807 · 417-887-7334



*Bass Pro Shops  
at Branson  
Landing*







# Johnny Morris WONDERS OF WILDLIFE NATIONAL MUSEUM & AQUARIUM

## VISIT THE LARGEST, MOST IMMERSIVE FISH & WILDLIFE ATTRACTION IN THE WORLD

Set sail on a voyage through America's Best Aquarium & Attraction while connecting with wildlife like never before! Our 1.5-million-gallon Aquarium Adventure showcases 35,000 live fish, mammals, reptiles, amphibians and birds, while our immersive Wildlife Galleries bring visitors eye-to-eye with the greatest collection of record setting game animals ever assembled. Created by noted conservationist and Bass Pro Shops founder Johnny Morris, the 350,000-square-foot experience contains more than 1.5 miles of trails through authentic and engaging wildlife habitats.

## FIND ADVENTURE UNDER THE SEA

Discover an ocean in the middle of America and explore rivers, lakes and streams for a truly one-of-a-kind aquatic expedition. Experience a swinging bridge amongst towering cypress trees, discover what it's like to touch a stingray, traverse an underwater tunnel surrounded by river monsters and plunge to the depths of the ocean amongst spectacular sharks.







## WONDERS OF WILDLIFE *(Continued)*

### TAKE A JOURNEY AROUND THE WORLD

Step into the wild with state-of-the-art 4D dioramas that completely surround you within the sights, sounds and smells of the planet's most extraordinary wildlife habitats. Meticulously recreated lifelike environments offer visitors a portal to the wild, educating them about the importance of conserving the precious icons of the animal kingdom.

### ENCOUNTERS

From interacting with penguins to swimming with sharks, our encounters make your trip to WOW one to remember. Come face-to-feather with the Penguin Encounter at Penguin Cove or experience meal time with the sharks and groupers as you dive beneath the surface during our Feeding Frenzy. The Out to Sea Shark Dive takes you underwater inside a metal cage to come face-to-fin with sand tiger sharks, brown sharks and Atlantic goliath groupers. Our Feeding Frenzy and Shark Dive activities use state-of-the-art air helmets that allow you to comfortably submerge underwater without a diver certification.

**FOR RATES, RESERVATIONS AND AVAILABILITY CALL  
888-222-6060 OR VISIT [WONDERSOFWILDLIFE.ORG](http://WONDERSOFWILDLIFE.ORG)**

**Purchase your tickets at the Angler's Lodge Front Desk  
to save on admission!**

**500 W. Sunshine St., Springfield, MO 65807**

**Located right next to Bass Pro Shops in Springfield.**







## **BIG CYPRESS L O D G E**

Experience a getaway the family will never forget at Bass Pro Shops at the Pyramid and Big Cypress Lodge in Memphis, TN. Located within an indoor cypress swamp, 535,000 square feet of retail space, attractions and overnight accommodations make for a one-of-a-kind experience. Unparalleled activities range from an underwater themed bowling alley to a spectacular restaurant at the peak of the Pyramid. You can even ride to the top of the Pyramid in the country's tallest freestanding elevator and take in captivating views of Memphis from over 300 feet in the air. In the evenings, settle in to the rustic comfort of Big Cypress Lodge. You can choose from one of many unique rooms like a treehouse suite or vintage duck hunting cabin, most overlooking the indoor cypress swamp below. Whether you are looking for an afternoon adventure or an overnight oasis, Bass Pro Shops at the Pyramid offers a truly memorable experience for the whole family. Call or visit the website to book your stay!



**877-269-5345 • [BIG-CYPRESS.COM](http://BIG-CYPRESS.COM)  
1 Bass Pro Dr., Memphis, TN 38105**



# IMPORTANT SAFETY INFORMATION

## TORNADO PROCEDURES

When inclement weather is in effect for Taney County, we will communicate severe weather alerts via the Zingle text messaging platform.

**In case of an imminent threat of a tornado, you will hear a loud siren. At this time you should TAKE IMMEDIATE COVER** in the appropriate tornado safety areas and follow the appropriate tornado precautions.

Once a Tornado Warning has ended, you will be notified via the Zingle text message platform that the storm has passed or an associate located in the designated take cover area will inform you of this information.

If you have a request for emergency assistance, please dial "0" and an operator will assist you.

Any time the Take Cover procedure has been activated, remember the acronym **D.U.C.K.**

**D**ownstairs to the lowest level of the structure.

**U**nder something sturdy.

**C**enter part of the structure.

**K**eept away from doors and windows.

## TORNADO SAFETY AREAS

### **Zone 1: Angler's Lodge Hollister**

Take cover in the lowest level of the structure in the restrooms or stairwells.

### **Zone 2: Devil's Pool Restaurant, Buzzard Bar, Spring View Lodge, Knotty Pine Cottages and Recreation Building**

Take cover in a restroom or closet in the lowest level of the structure. **Devil's Pool Restaurant and Buzzard Bar** – take cover in the break room, manager's office or lower level restrooms. **Recreation Building** (includes Ozark Room, Fitness Center & Painting Studio) – take cover in the lower level restrooms. **Spring View Lodge** and **Knotty Pine Cottages** – take cover in an interior closet. If time permits, proceed to the restrooms of Buzzard Bar.

### **Zone 3: Valley View Lodge**

Take cover in a restroom or closet on the lowest level of the structure. If time permits, proceed to the Grandview Conference Center and take cover in the lowest level restrooms or banquet storage area.

### **Zone 4: Cedar Trail Cabins and Bent Hook Marina**

Take cover in a restroom or closet on the lowest level of the structure. **Bent Hook Marina** – get off the docks. If ample time, Marina associates will direct guests to take cover in the housekeeping storage facility beneath Cabin 618. If time does not permit, take cover in the back room of the marina store.

### **Zone 5: Devil's Pool Cabins**

Take cover in a restroom or closet on the lowest level of the structure.

### **Zone 6: Registration, The Shoppe and guests afoot in the area**

Take cover in the downstairs restrooms or the banquet storage closet beneath The Shoppe stairwell.

### **Zone 7: Lakeside Cabins and Bass Pro Shops Lakeside Cottages**

Take cover in a restroom or closet on the lowest level of the structure.



### **Zone 8: The Worman House and Truman Café and Custard**

Take cover in a restroom on the lowest level of the structure.

### **Zone 9: Top of the Rock**

**Osage Restaurant and Buffalo Bar** – take cover in the lower level restrooms and kitchen areas in Buffalo Bar. **Arnie’s Barn** take cover in the lowest level of the stairwells and locker rooms located in the Pro Shop. **Ancient Ozarks Natural History Museum** – take cover in the theater room, restrooms or any interior non-glass areas. **End of the Trail All-American Wine Cellar** – take cover in the elevator corridor and the area beneath the stairwell away from windows. **Chapel of the Ozarks** – take cover in a restroom or closet on the lowest level of the structure. **Top of the Rock Golf Course** – take cover in the golf cart tunnel, lower level of Arnie’s Barn or the End of the Trail All-American Wine Cellar. If time does not permit, find a low-lying area of the golf course away from trees and lie flat in a ditch. **Jack’s Cabin** – take cover beneath the stairwell of the cabin or in a closet on the lowest level of the structure. **Lost Canyon Cave and Nature Trail** – take cover inside the cave if time permits. If on the trail path away from the cave, vacate golf carts, lie flat in a low-lying ditch and cover your head. **Top of The Rock Welcome Center** – take cover in the restrooms.

### **Zone 10: Falls Lodge**

Take cover in the lowest level of the structure in the south stairwells and hallways.

### **Zone 11: Cedar Creek Spa**

Take cover in the lowest level of the structure in the associate break room area or the grotto pool room.

### **Zone 12: Grandview Conference Center**

Take cover in the lowest level restrooms or storage area.

### **Zone 13: Lady Liberty**

Take cover in the restrooms, galley or lay flat on the floor of the lower cabin. Follow the Captain’s instructions.

### **Zone 14: Long Creek Marina**

Get off the docks and take cover in the shower building or nearest restrooms. If time does not permit, take cover in the restrooms, storage room on the fuel dock or in the changing room of the marina store.

### **Zone 15: Buffalo Ridge, Mountain Top, Ozarks National & Payne’s Valley Golf Courses**

If indoors, take cover in a restroom, closet or locker room on the lowest level of the structure. If time permits, take cover in the cart tunnel. If on the golf course, take cover in the cart tunnel. If time does not permit, vacate any golf carts, find a low-lying area of the golf course away from trees and lie flat in a ditch.

### **Zone 16: Shooting Academy**

Take cover in the restrooms or near the storage area on the lowest level of the structure.

### **Zone 17: Integrity Hills**

**Chapel & Stables** – take cover in the lower level restrooms located behind the Chapel. **Villa** – take cover in a restroom or closet on the lowest level of the structure.

### **Zone 18: Camp Long Creek**

Take cover in the nearest restrooms or shower area. **Registration** – if time does not permit, take cover in the restrooms or closet.

### **Zone 19: Fun Mountain**

Take cover in the lower level storage room on the north side of the structure or lower level restrooms.

### **Zone 20: Payne’s Valley Cottages**

Take cover in a restroom or closet on the lowest level of the structure.

**NOTE: Anyone caught outdoors during a tornado warning without time to make it to a “safety area” should exit vehicle, lie down in a low spot, ditch, culvert, or ravine (away from power lines and trees) and shield their head with their arms.**

## **LIGHTNING**

**30/30 Lightning safety rule:** After you see lightning, start counting to 30. If you hear thunder before you reach 30, cease outdoor activities and seek shelter indoors. Suspend outdoor activities for at least 30 minutes after the last clap of thunder.

**Golf Courses:** If you are caught in a lightning storm while on a golf course, squat down to the ground, resting on the balls of your feet with 30’ of distance from fellow golfers and cover your head.

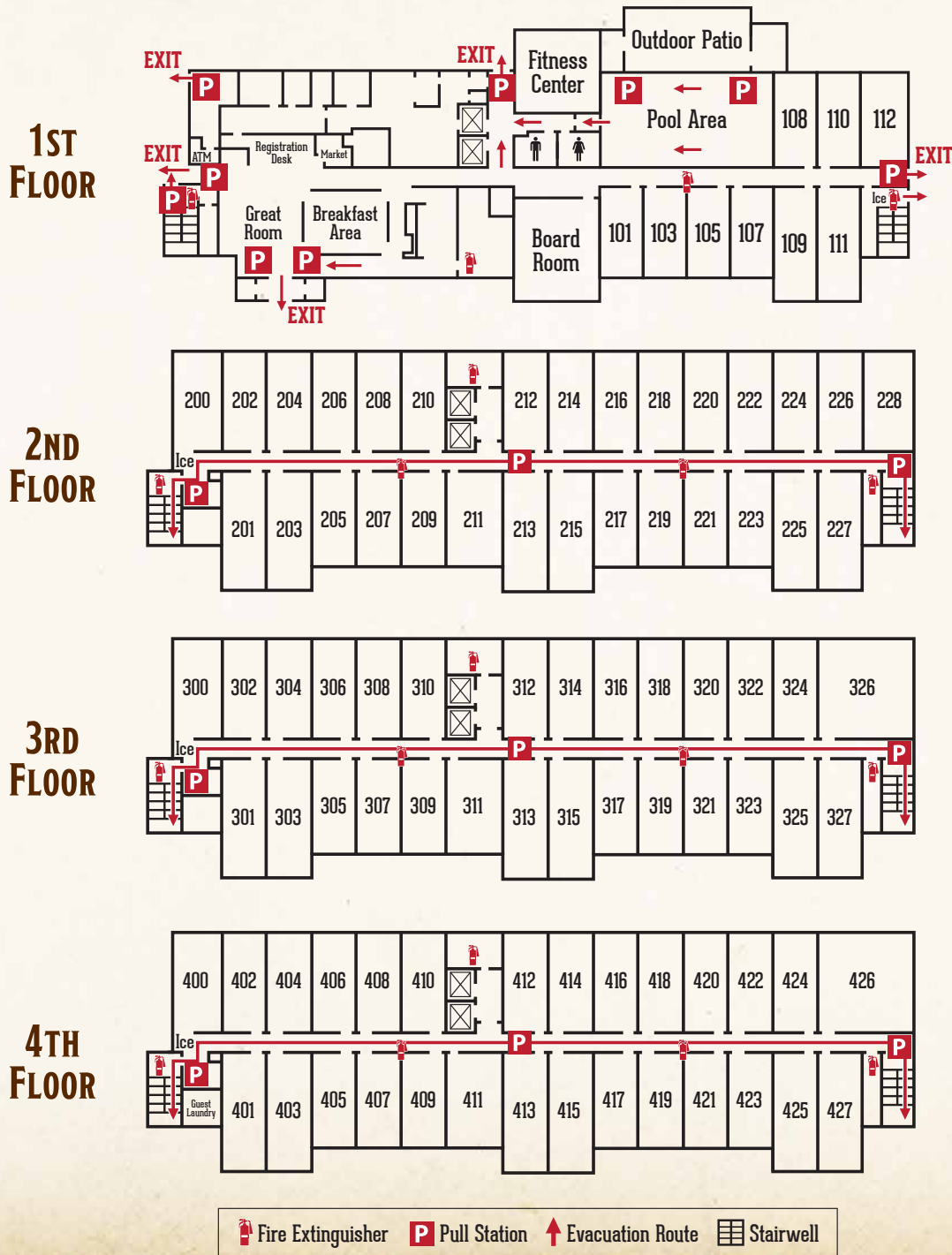


# EVACUATION PLAN INFORMATION

**In case of fire, exit through the closest door. Do not use elevator.** If you detect fire or smoke, call "0" for an operator or in the event of an emergency you may dial "911."

If smoke is heavy, seal the door with wet towels. Stay near or lie on the floor where air will be clearer until help arrives.

If you must leave, feel the door to see if it is hot. If not, open the door cautiously and evaluate the condition of the evacuation route. If it appears safe, proceed to leave your room. Please close the door behind you. Be sure to take your room key with you as you may have to re-enter your room if the evacuation path is blocked.







# ANGLER'S LODGE

291 FINANCIAL DRIVE • HOLLISTER, MO 65672  
 (855) 225-6734 • BASSPROANGLERSLODGE.COM