



ANGLER'S LODGE

Welcome!



DIRECTORY OF SERVICES



Welcome

TO BASS PRO SHOPS ANGLER'S LODGE!

We are thrilled that you have chosen to join us for a stay in the Ozarks. We invite you to leave everything behind and enjoy all that we offer here in America's Conservation Capital. As a member of the Bass Pro Shops family, you can count on genuine hospitality and unmatched attention to detail to help make your experience memorable.

If there is anything that we can do to make you more comfortable, please do not hesitate to call the Front Desk.

INDEX

Guest Information	3
Important Safety Information	4
Bass Pro Shops Outdoor World	5
Wonders of Wildlife National Museum & Aquarium	6-7
Finley Farms & The Ozark Mill	8
Dogwood Canyon Nature Park	9-10
Top of the Rock Ozarks Heritage Preserve	11-12
Camp Long Creek at Big Cedar Lodge	13
Bass Pro Shops Long Creek Marina	13-14
Big Cedar Lodge	15-16
Big Cedar Golf	17-18
Big Cypress Lodge at the Bass Pro Shops Pyramid	19
Map of Local Attractions	Back Cover

GUEST INFORMATION

Thank you for choosing to visit us at Angler's Lodge. This directory will provide you with details to experience all that we have to offer and make your stay in the Ozarks unforgettable!

- Check-in time is 4:00pm. Check-out time is 11:00am (late checkout fees do apply).
- All accommodations are non-smoking.
- Photocopy and postal services are located at the Front Desk.
- Please contact the Front Desk for any lost and found items.
- Please contact the Front Desk for no charge items. Microwaves are available for an additional charge.
- Ice and vending machines are located on each floor.
- For any additional needs or questions, please contact the Front Desk.



TELEPHONE DIALING INSTRUCTIONS

- For room-to-room calls, dial “1” followed by the three-digit room number.
- For off-property calls, dial “9” followed by the phone number of the party you are trying to reach.

WI-FI INSTRUCTIONS

1. Turn on your computer and ensure Wi-Fi is enabled.
2. Select the Angler's Lodge wireless network.
3. Select “Angler's Lodge Guest” from the Wi-Fi listing.
4. Enter Wi-Fi password: **Bass2021**
5. You’re now connected!



IMPORTANT SAFETY INFORMATION

TORNADO PROCEDURES

When inclement weather is in effect for Greene County, the Front Desk will be in contact with you via in-room phone.

In case of an imminent threat of a tornado, you will hear a loud siren. At this time you should **TAKE IMMEDIATE COVER** in the appropriate tornado safety areas and follow the appropriate tornado precautions.

Once a Tornado Warning has ended, you will be notified via in-room phone that the storm has passed or an associate located in the designated take cover area will inform you of this information.

If you have a request for emergency assistance, please dial "0" and an attendant will assist you.

Any time the take cover procedure has been activated, remember the acronym **D.U.C.K.**

- Downstairs to the lowest level of the structure.
- Under something sturdy.
- Center part of the structure.
- Keep away from doors and windows.

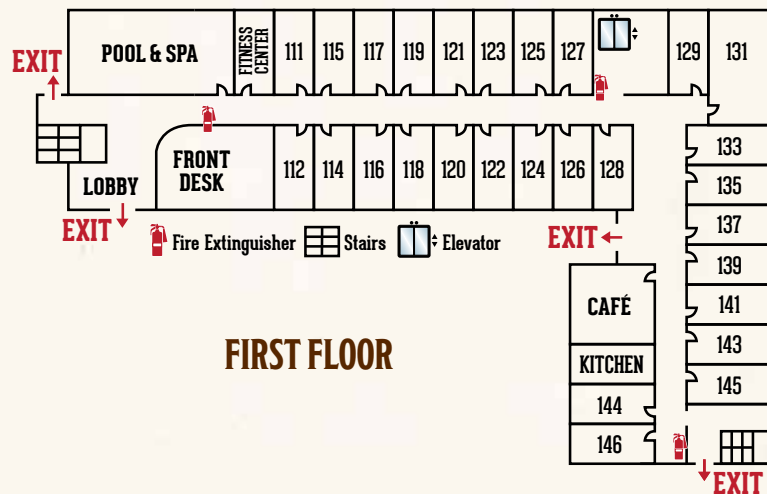
EVACUATION PLAN INFORMATION

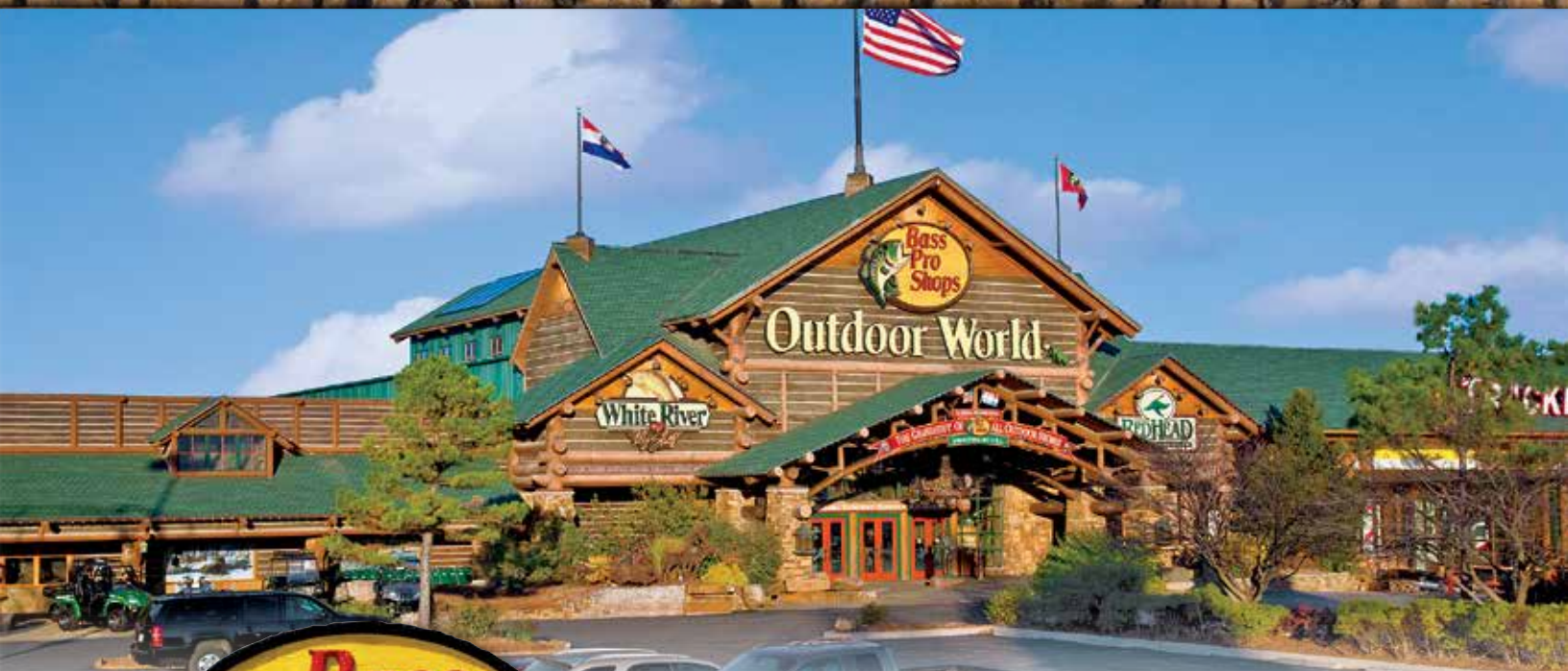
In case of fire, exit through the closest door. **Do not use elevator.**

If you detect fire or smoke, call "0" for an operator or in the event of an emergency you may dial "9" then "911."

If smoke is heavy, seal the door with wet towels. Stay near or lie on the floor where air will be clearer until help arrives.

If you must leave, feel the door to see if it is hot. If not, open the door cautiously and evaluate the condition of the evacuation route. If it appears safe, proceed to leave your room. Please close the door behind you. Be sure to take your room key with you as you may have to re-enter your room if the evacuation path is blocked.

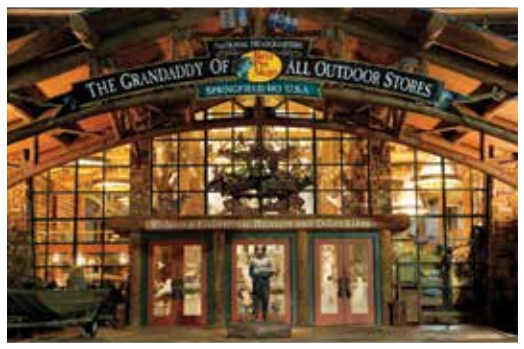




YOUR ADVENTURE STARTS HERE!

Welcome to the “granddaddy of all outdoor stores,” the original Bass Pro Shops Outdoor World. Our national headquarters store offers more than 500,000 square feet of immersive shopping fun and one of the largest assortments of outdoor gear, apparel and gifts under one roof. It’s so much more than a store... it’s an interactive experience tailored to the region’s unique natural landscape and habitats. Giant aquariums teeming with native fish, thousands of local antiques and artifacts, hundreds of trophy fish and wildlife mounts, and hand painted murals that celebrate local scenes will immerse you in the excitement of the outdoors from the moment you enter. Our team of dedicated and knowledgeable Outfitters are ready to share their passion for the outdoors with you. You’ll find everything you need – all backed by a low-price guarantee.

Plus, we feature America’s favorite boats! In 1978, Johnny Morris revolutionized the marine industry when he introduced the world’s first professionally rigged and nationally marketed boat, motor and trailer packages. Tracker® Boats quickly became and has remained the number one selling fishing boat brand in America. Today, White River Marine Group is the largest manufacturer of boats in the world by volume, manufacturing quality boats offering performance, innovation and value with world-class service. In 2019, we extended our legacy to the off-road vehicle industry by partnering with Textron to create the TRACKER OFF ROAD lineup of ATVs, side-by-sides and sport carts. By partnering together, we have been able to help even more people experience the joy of fishing, boating and the great outdoors.



417-887-7334 • BASSPRO.COM
1935 South Campbell Ave., Springfield, MO 65807
Located just across Sunshine St.



Johnny Morris
WONDERS OF WILDLIFE
— NATIONAL —
MUSEUM & AQUARIUM

VISIT THE LARGEST, MOST IMMERSIVE FISH & WILDLIFE ATTRACTION IN THE WORLD

Set sail on a voyage through America's Best Aquarium & Attraction while connecting with wildlife like never before! Our 1.5-million-gallon Aquarium Adventure showcases 35,000 live fish, mammals, reptiles, amphibians and birds, while our immersive Wildlife Galleries bring visitors eye-to-eye with the greatest collection of record setting game animals ever assembled. Created by noted conservationist and Bass Pro Shops founder Johnny Morris, the 350,000-square-foot experience contains more than 1.5 miles of trails through authentic and engaging wildlife habitats.

FIND ADVENTURE UNDER THE SEA

Discover an ocean in the middle of America and explore rivers, lakes and streams for a truly one-of-a-kind aquatic expedition. Experience a swinging bridge amongst towering cypress trees, discover what it's like to touch a stingray, traverse an underwater tunnel surrounded by river monsters and plunge to the depths of the ocean amongst spectacular sharks.





WONDERS OF WILDLIFE *(Continued)*

TAKE A JOURNEY AROUND THE WORLD

Step into the wild with state-of-the-art 4D dioramas that completely surround you within the sights, sounds and smells of the planet's most extraordinary wildlife habitats. Meticulously recreated lifelike environments offer visitors a portal to the wild, educating them about the importance of conserving the precious icons of the animal kingdom.

ENCOUNTERS

From interacting with penguins to swimming with sharks, our encounters make your trip to WOW one to remember. Come face-to-feather with the Penguin Encounter at Penguin Cove or experience meal time with the sharks and groupers as you dive beneath the surface during our Feeding Frenzy. The Out to Sea Shark Dive takes you underwater inside a metal cage to come face-to-fin with sand tiger sharks, brown sharks and Atlantic goliath groupers. Our Feeding Frenzy and Shark Dive activities use state-of-the-art air helmets that allow you to comfortably submerge underwater without a diver certification.

**FOR RATES, RESERVATIONS AND AVAILABILITY CALL
888-222-6060 OR VISIT WONDERSOFWILDLIFE.ORG**

**Purchase your tickets online early to save on admission!
500 W. Sunshine St., Springfield, MO 65807
Located right next to Bass Pro Shops.**





FINLEY *F* FARMS

& THE OZARK MILL

Finley Farms is a nature-based gathering place and farm-forward dining destination located in the heart of the Ozarks. Guests can enjoy farm-to-table lunches and dinners at The Ozark Mill Restaurant. As a nod to The Mill's original purpose, the family-friendly menu highlights fire-baked grain mill pizzas, pastas and seasonal dishes. The Garrison, hidden beneath The Ozark Mill Restaurant, features upscale, shareable plates and high-brow cocktails. The Workshop is a charming coffee shop at the entrance of Finley Farms, featuring flavorful toasts, homemade pastries, and made-to-order specialty coffees.

While visiting, guests are encouraged to take a leisurely mile-long walk across the beautiful historic property on our nature trail, encompassing The Farm, The Riverside Bridge, and The Chapel. Experience an interactive, self-guided, behind-the-scenes look at The Ozark Mill's inner workings on a Mill Tour, showcasing the spirit of the Ozarks through moving machinery, video displays and theatrical projections. Join us for our seasonal Ozarks Farmers Market or a Workshop, for hands-on learning experiences such as cocktail crafting or floral arranging. Find our schedule of upcoming workshops and experiences on our calendar at [FinleyFarmsMO.com/Happenings](https://www.FinleyFarmsMO.com/Happenings).

417-210-6644 · [FINLEYFARMSMO.COM](https://www.FinleyFarmsMO.com)

802 Finley Farms Lane, Ozark, MO 65721

Located just 20 minutes south in Ozark, MO.





DOGWOOD CANYON

NATURE PARK



Experience the unspoiled beauty of mother nature at Dogwood Canyon Nature Park. Guided by Johnny Morris' commitment to conservation, this 10,000-acre paradise provides a perfect setting for adventure seeking and memory making. Ask us about our dog-friendly policies!

MILL & RESTAURANT

As you enter the park, visit the Dogwood Canyon Mill and witness live demonstrations with a waterwheel-powered millstone. These fresh-ground products are even available for purchase, so you can take home a piece of the experience. On your way to the Canyon Grill, walk through a captivating display of Native American artifacts that offer a glimpse into the area's earliest settlers. At the restaurant, enjoy a unique menu of Ozarks flavors while taking in waterfall views. *Access is complimentary with park admission.*



NATURE & CONSERVATION CENTER AND TREEHOUSE

Located across from the Mill is a one-of-a-kind Nature & Conservation Center and a Treehouse featured on the Animal Planet TV show, *Treehouse Masters*. The park and foundation educates others about the importance of protecting, conserving and preserving the great outdoors by taking the cause into the classrooms of the Nature & Conservation Center and the hands-on Treehouse activities. You won't want to miss this chance to learn more about the beauty of the Ozarks.



WILDLIFE TRAM TOURS

Step aboard the comfortable, open air trams and explore the scenic beauty of Dogwood Canyon on our Wildlife Tram Tour. You'll see our most popular sites and waterfalls and then cross the Arkansas border where your tram may mingle with herds of bison, elk and Texas longhorn. *Reservations are recommended, and an additional fee is required.*



DOGWOOD CANYON *(Continued)*

HORSEBACK RIDING

Horseback riding at Dogwood Canyon presents an opportunity to experience the park in areas not seen by the tram or from walking and biking trails. Experienced wranglers guide guests on a leisurely ride while exploring ridges, hollows, old logging roads and other scenic views. Age requirements and weight limits apply. *Reservations are recommended, and an additional fee is required.*

TROUT FISHING

One of Dogwood Canyon's greatest appeals is the sparkling, spring-fed water that is home to our magnificent rainbow trout. We offer half-day guided catch and release fishing, and self-guided catch and release or catch and keep fishing. At Dogwood Canyon, there is no license or trout stamp requirement, and our General Store has everything needed for your fishing adventure. *An additional fee is required. Self-guided fishing can be reserved at the ticket counter. Guided fishing must be reserved online in advance.*

HIKE & BIKE

Self-guided tours allow you to explore miles of paved and rugged trails by foot or bike. You can bring your bike or single-speed, coaster-brake bikes are available in a variety of sizes (including kiddie carts) to provide a comfortable ride. *Bike rental is available at the General Store for an additional fee.*

PRIVATE WILDLIFE TOURS

The most "up close and personal" way to view the park is aboard one of our cross-country vehicles. Offered year round, but with limited availability, this guided tour gives parties of one to three guests a close glimpse into the heart of the canyon and a return trip via back-country logging roads. *Reservations are required in advance, and an additional fee is required.*

WEDDINGS

Make your wedding day picture-perfect at Dogwood Canyon. Choose from beautiful backdrops, a stunning chapel and intimate locations overlooking cascading waterfalls. *Inquire at weddings@dogwoodcanyon.org.*

**FOR RATES, RESERVATIONS AND AVAILABILITY CALL
800-456-4812 OR VISIT DOGWOODCANYON.ORG**

**Purchase your tickets online early to save on admission!
2038 W. State Highway 86, Lampe, MO 65681
Located just a short drive southwest of Branson near the Missouri/Arkansas state line.**





SUNSET CANNON FIRING CEREMONY



LOST CANYON CAVE & NATURE TRAIL



ANCIENT OZARKS NATURAL HISTORY MUSEUM

Johnny Morris' **TOP OF THE ROCK** **OZARKS HERITAGE PRESERVE™**

Johnny Morris' Top of the Rock Ozarks Heritage Preserve reveals the majestic beauty of the Ozarks as it has never been seen before. This landmark first for the region is home to remarkable restaurants, world-class golf and extraordinary attractions.

LOST CANYON CAVE & NATURE TRAIL

Begin your journey to Top of the Rock with an unforgettable two-and-a-half mile ride in an electric cart along the Lost Canyon Nature Trail. Explore the walls of the ancient bedrock canyon, peer over the edge of picturesque vistas and connect with the beauty and wonder of the Ozarks. Along the trail you can even stop inside the Lost Canyon Cave for a signature cocktail at the Bat Bar (open seasonally) while taking in captivating views of the four-story waterfall. Lost Canyon Cave & Nature Trail ticket purchases include complimentary admission to the Ancient Ozarks Natural History Museum! Purchase your tickets online early to save on admission.

ANCIENT OZARKS NATURAL HISTORY MUSEUM

Centuries before Europeans ever touched these shores, unimaginable beasts roamed this land. Years later, cave dwellers, then Native Americans made their home in these Ozark hills. The Ancient Ozarks Natural History Museum will bring you face-to-face with carbon-dated skeletons of ancient Missouri creatures and true-to-life dioramas of animals that once roamed the Ozarks. Explore over 35,000 square feet of one of the nation's largest collections of Native American artifacts and artwork as well as expansive galleries on the American West and Civil War.



TOP OF THE ROCK *(Continued)*

DINING

Osage Restaurant is the cornerstone dining experience featuring American cuisine with sweeping Ozark Mountain views. It is a fascinating destination where guests can linger long after their meal to take in the fine artwork and native artifacts. Located on the lower level of Osage Restaurant, **Buffalo Bar** offers a full dinner menu including wood-fired pizzas, premium cocktails and spirits, and open-air dining that offers stunning views of Table Rock Lake. A stone-lined stairwell leads to the expansive **End of the Trail All-American Wine Cellar** which includes a wine tasting bar, whiskey room and banquet space. **Arnie's Barn** is a 150-year-old wooden barn that was brought from Arnold Palmer's hometown in Latrobe, Pennsylvania and reconstructed at Top of the Rock by a local Amish family. This magnificent structure houses a Mexican restaurant that features soaring, vaulted ceilings, two lofts and is also home to the Top of the Rock Pro Shop.

CATHEDRAL OF NATURE

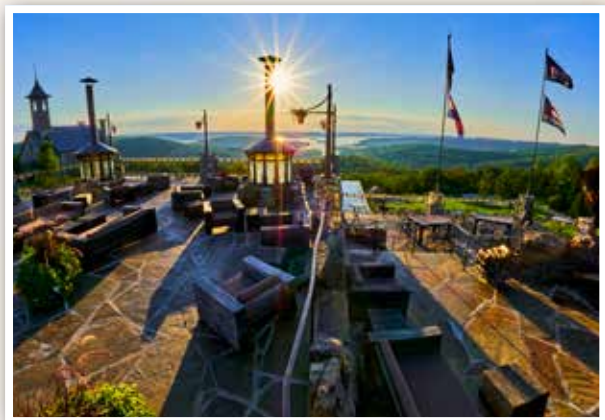
While at Top of the Rock, be sure to visit the sinkhole, now known as the Cathedral of Nature. Featured in international news since its formation in May of 2015, Johnny Morris is deep into a national treasure hunt that may very well reveal a hidden natural wonder buried deep within the Ozarks.

**FOR RATES, RESERVATIONS AND AVAILABILITY
CALL 800-225-6343 OR VISIT TOPOFTHEROCK.COM**

150 Top of the Rock Rd., Ridgedale, MO 65739
Located just south of Branson.



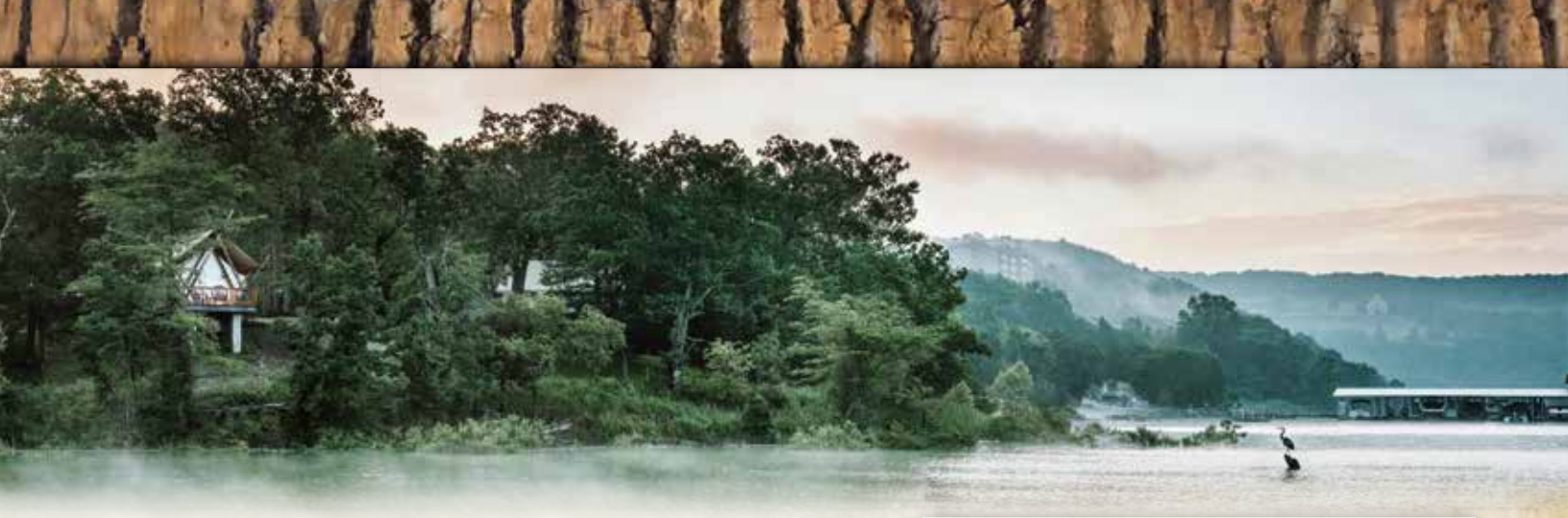
END OF THE TRAIL ALL-AMERICAN WINE CELLAR



BUFFALO BAR PATIO DINING



CATHEDRAL OF NATURE



CAMP LONG CREEK AT BIG CEDAR LODGE

Camp Long Creek offers accommodations that bring you in close contact with nature, combining camping and comfort. Situated on Table Rock Lake, enjoy a serene backdrop while relaxing in one of the unique accommodations: camp huts, camp cabins or glamping tents. Designed for the whole family, Camp Long Creek features pet-friendly units, a full-service marina and an infinity pool. It's hard to imagine a better setting to create lasting memories with your family in the great outdoors.



Long Creek Marina is the best place to start your day on the 43,000-acre Table Rock Lake. Whether you like cruising, waterskiing, tubing, wakeboarding or jet skiing, Long Creek Marina has the most state-of-the-art water sports equipment available. Brought your own boat? Be greeted with genuine Ozark hospitality from the Marina staff at the gas dock to get fueled up for your day of fun on the lake. From veteran anglers to first-time fishers, the Long Creek Marina store has everything you need to stock up your cooler for a day on the water. Is the lake calling you yet?

BOAT, PERSONAL WATERCRAFT & ACCESSORY RENTALS

You can launch your own boat or rent fully-equipped White River Marine Group bass boats, ski boats and pontoon boats by the hour or by the day! We offer the most state-of-the-art water sports equipment available including WaveRunners, tubes, wakeboards, kneeboards and all your skiing accessories.

GOIN' JESSI CRUISES

Take a private one-hour champagne tour of Table Rock Lake aboard the Goin' Jessi, a vintage wooden Chris-Craft boat. With her inboard motor, she was built for cruising. Just sit back and let your captain take you for a relaxing sightseeing excursion. Cruises are available April through October. *Reservations required.*

LONG CREEK MARINA *(Continued)*

LADY LIBERTY CRUISES

Set sail and dine on our beautiful 62' luxury yacht and experience delicious food, live music and unbelievable views of Table Rock Lake. The Lady Liberty offers various unique dining experiences including our Fireworks Cruises for the best seat in the house for Big Cedar's holiday fireworks shows. The Lady Liberty is also available for private celebrations, corporate and group events. *Reservations required. All guests must be able to navigate stairs.*

SLIP RENTALS

We offer a variety of sizes in overnight and annual slip rentals. All docks have power, water and locking gates for convenience and high level of security.

PROFESSIONAL SKI SCHOOL

Learn to Ski, Slalom, Wakeboard, Kneeboard, or Tube on Table Rock Lake with a professional ski instructor! Available May through September. *Reservations required.*

PROFESSIONAL FISHING GUIDES

We offer professional local guides with knowledge of the best angling equipment and techniques. Guide services are offered daily. *Reservations required.*

MISSOURI FISHING LICENSES

We have the following fishing licenses available for purchase:

- Annual resident/non-resident licenses for ages 16 and older.
- Day permits for residents/non-residents ages 16 older.
- Trout stamps for all ages.

**FOR RATES, RESERVATIONS AND AVAILABILITY
CALL 800-225-6343 OR VISIT BIGCEDAR.COM**

1368 Long Creek Rd., Ridgedale, MO 65739
Located just south of Branson.





PRIVATE LOG CABIN



FALLS LODGE



FUN MOUNTAIN



BIG CEDAR[®] LODGE

• AMERICA'S PREMIER WILDERNESS RESORT •

Located in the Missouri Ozark Mountains, overlooking Table Rock Lake, Big Cedar[®] is a remote haven of natural beauty and outdoor adventure. As part of the Bass Pro Shops family, this premier wilderness resort has received numerous awards, including being named the number one resort in the Midwest by *Travel and Leisure* magazine for three consecutive years.

With genuine Ozarks hospitality and unmatched attention to detail, Big Cedar features a collection of lodges, cottages and cabins offering the perfect place to relax with family and friends after a day on the lake. The resort is home to a variety of world-class restaurants and attractions like two full-service marinas, championship golf, an expansive shooting facility and Fun Mountain, a 50,000-square-foot activity center. This addition features an arcade, laser tag, bumper cars, and an underwater-themed restaurant and bowling alley.



BIG CEDAR LODGE *(Continued)*

Set out on a lake outing for a guided fishing excursion, boat rentals or a sunset dinner cruise aboard our 62' luxury yacht, Lady Liberty. Experience the ultimate in relaxation and rejuvenation at the 18,000-square-foot Cedar Creek Spa. This world-class facility is dressed in rustic elegance and features one-of-a-kind amenities and services.

With countless venues, activities, team building opportunities and attractions, Big Cedar Lodge is the ideal destination for your group gathering or special event. The Big Cedar properties feature four wedding chapels, numerous outdoor settings, over 20,000 square feet of meeting space and a grand conference center that can seat up to 1,000 guests theater style.

Whether you are looking for an adventurous outing or a relaxing retreat. Big Cedar Lodge is your perfect getaway!

**FOR RATES, RESERVATIONS AND AVAILABILITY
CALL 800-225-6343 OR VISIT BIGCEDAR.COM**

190 Top of the Rock Rd., Ridgedale, MO 65739
Located just south of Branson.



WORLD-CLASS CEDAR CREEK SPA



GRANDVIEW CONFERENCE CENTER



BEAUTIFUL WEDDING LOCATIONS





BIG CEDAR GOLF

#1 Family Golf Resort in North America
- *GOLF Magazine*

Inspired by a deep desire to connect people to nature, Bass Pro Shops Founder, Johnny Morris, has set out to create one of the greatest golf experiences in the country. Golf at Big Cedar includes the following world-class destinations:

PAYNE'S VALLEY COURSE

Paying tribute to Ozarks native and World Golf Hall of Fame member, Payne Stewart, Payne's Valley is the first public-access golf course designed by 82-time PGA TOUR winner Tiger Woods and Woods-led golf course design firm, TGR Design. Payne's Valley stands out with its inviting layout, pristine water features, large fairways and greens, and spectacular 19th hole – the Big Rock at Payne's Valley™ by Johnny Morris.

1250 Golf Club Drive, Hollister, MO 65672.

OZARKS NATIONAL COURSE

Measuring 7,036 yards from the back tees, Ozarks National is Missouri's first-and-only golf course designed by architect duo Bill Coore and Ben Crenshaw. The 18-hole layout represents the terrain of the Ozarks with beautiful views and features challenging carries with a variety of visually appealing approach shots that are highlighted by the native habitat.

2219 Branson Creek Blvd., Hollister, MO 65672.

BUFFALO RIDGE COURSE

Herds of roaming bison graze on the native prairie grasses that surround Buffalo Ridge. The 18-hole championship course designed by Tom Fazio with visionary conservationist Johnny Morris, showcases the beauty of the Ozarks with natural rock formations, caves, creeks, lakes and waterfalls throughout the routing of one of Missouri's best golf courses.

1001 Branson Creek Blvd., Hollister, MO 65672.



PAYNE'S VALLEY COURSE



OZARKS NATIONAL COURSE



BUFFALO RIDGE COURSE



TOP OF THE ROCK COURSE



MOUNTAIN TOP COURSE



PRACTICE FACILITIES

BIG CEDAR GOLF *(Continued)*

TOP OF THE ROCK COURSE

Top of the Rock Golf Course, a 9-hole par-3 Signature Design by Jack Nicklaus, was the first-ever par-3 course to be included in a professional championship. Perched high above Table Rock Lake, the peaceful waterfalls, wandering creeks, bass-filled ponds and pristine lakes of Top of the Rock complete a true celebration of nature, the Ozarks and the game of golf. Be sure and check out the Top of the Rock Pro Shop located in Arnie's Barn – it has everything needed for a day on the course.

150 Top of the Rock Rd., Ridgedale, MO 65739.

MOUNTAIN TOP COURSE

Johnny Morris teamed up with World Golf Hall of Fame legend Gary Player to create Mountain Top, a world-class 13-hole par-3 course that delivers an unparalleled experience for golfers. The walking-only course routes through unforgettable rock formations and includes some of the most dramatic views in the Ozarks while delivering a rewarding experience for all skill levels.

1250 Golf Club Drive, Hollister, MO 65672.

PRACTICE FACILITIES

Big Cedar Lodge offers world-class practice facilities for both experienced golfers looking to master their swing and beginner golfers just starting to pick up the game. The driving ranges feature an unending amount of open space ready for endless play. Course-style chipping greens and short game areas are also available, with room for pitching and sand practice along with several putting greens, including a 9-hole Himalayan-style putting course designed by Missouri native Tom Watson.

**FOR RATES, RESERVATIONS AND AVAILABILITY
CALL 800-225-6343 OR VISIT GOLFBIGCEDAR.COM**



BIG CYPRESS LODGE



Experience a getaway the family will never forget at Bass Pro Shops at the Pyramid and Big Cypress Lodge in Memphis, TN. Located within an indoor cypress swamp, 535,000 square feet of retail space, attractions and overnight accommodations make for a one-of-a-kind experience. Unparalleled activities range from an underwater themed bowling alley to a spectacular restaurant at the peak of the Pyramid. You can even ride to the top of the Pyramid in the country's tallest freestanding elevator and take in captivating views of Memphis from over 300 feet in the air. In the evenings, settle in to the rustic comfort of Big Cypress Lodge. You can choose from one of many unique rooms like a treehouse suite or vintage duck hunting cabin, most overlooking the indoor cypress swamp below. Whether you are looking for an afternoon adventure or an overnight oasis, Bass Pro Shops at the Pyramid offers a truly memorable experience for the whole family. Call or visit the website to book your stay!

877-269-5345 • BIG-CYPRESS.COM

1 Bass Pro Dr., Memphis, TN 38105



ANGLER'S LODGE

621 W. SUNSHINE • SPRINGFIELD, MO 65807
 800-445-5132 • BASSPROANGLERSLODGE.COM